

Bringing the

**BIG OUTDOORS**

*closer to everyone*

**GREEN** ARC

Bringing the **BIG OUTDOORS** closer to everyone

**Presented by  
Mary Parodi - Director**

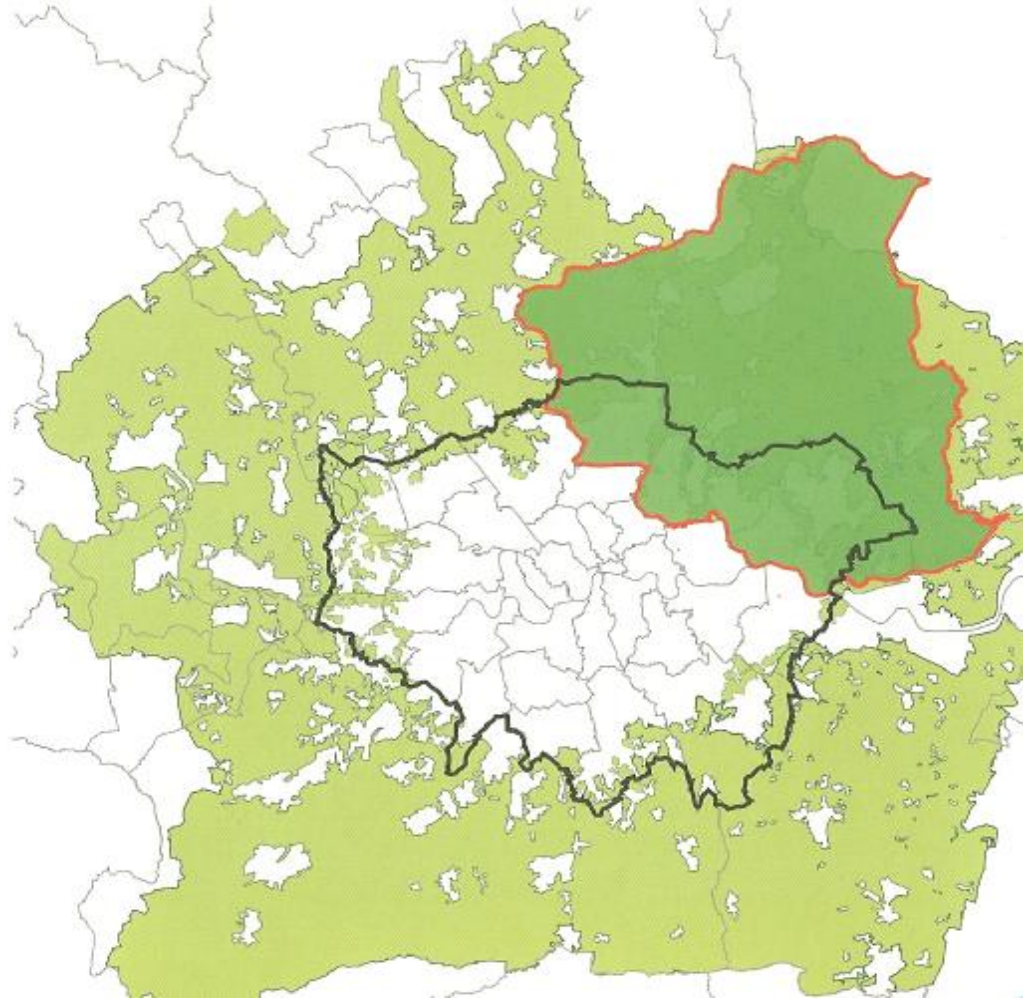
**GREEN** ARC  
Bringing the **BIG OUTDOORS** closer to everyone

# What is GreenArc?

A multi agency, cross regional, cross county strategic landscape initiative which aims:

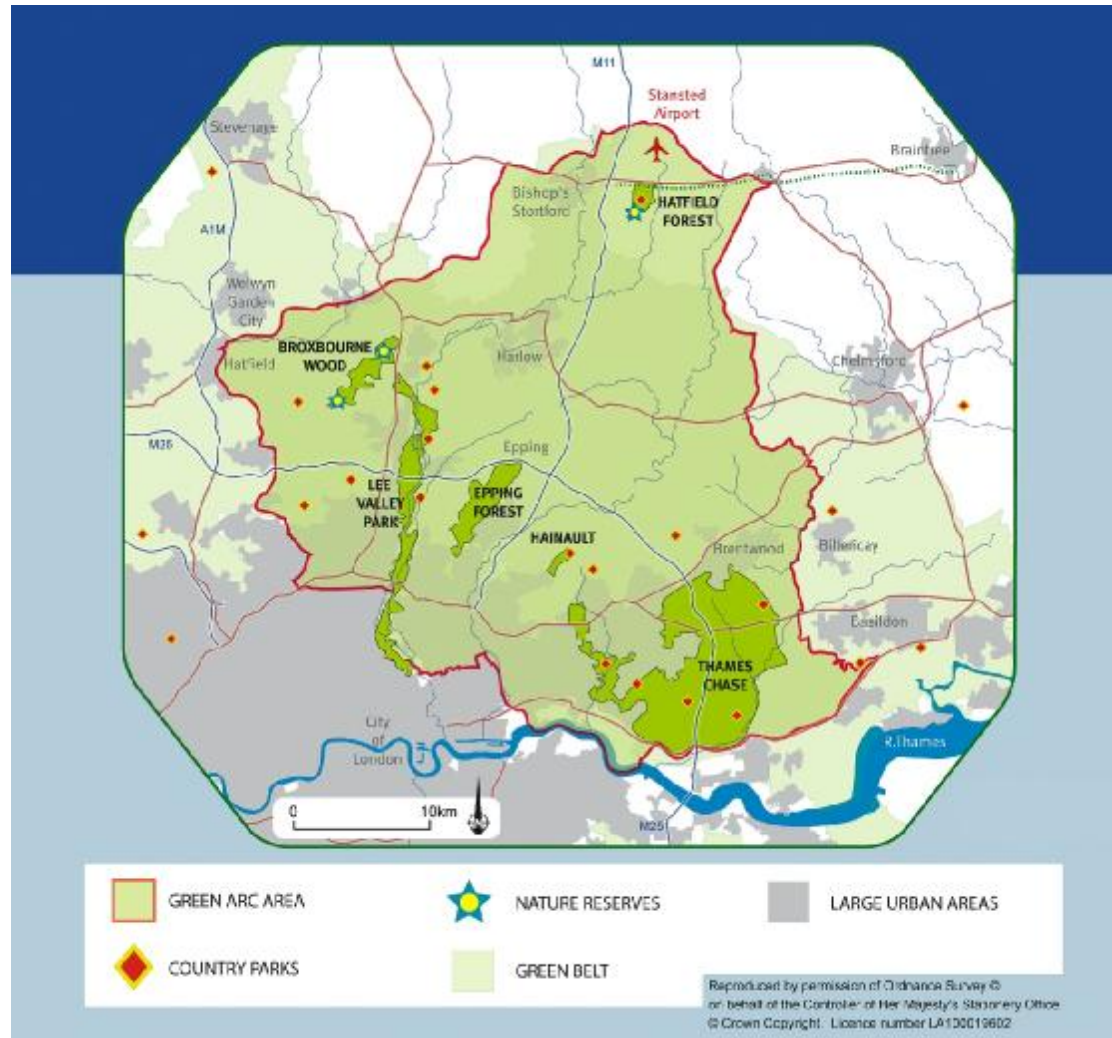
- to enhance, protect and conserve the green belt for public use,
- to increase and expand open space to growth area populations,
- to protect and conserve biodiversity and wildlife.

Bringing the  
**BIG OUTDOORS**  
*closer to everyone*



**GREEN ARC**  
Bringing the BIG OUTDOORS closer to everyone

Bringing the  
**BIG OUTDOORS**  
*closer to everyone*



# Contributing Partners

Essex County Council (Host organisation)

Natural England

The Forestry Commission

The City of London

The Greater London Authority

Lee Valley Regional Park

# Delivery Partners

The Woodland Trust

Essex Wildlife Trust

The City of London

Lee Valley Regional Park Authority

The National Trust

BTCV

The Environment Agency

The Land Restoration Trust

British Waterways

Herts Wildlife Trust

Groundwork

FWAG

# Site Management

Two key management  
criteria for GreenArc:

- Managing to benefit people
- Managing to benefit wildlife

# Concept

## What does this Involve?

- Total GreenArc area around 136,000 ha
- Reasonable expectation of 10% area increase to achieve the Vision and Strategic Objectives
- A 40 year delivery plan



# Benefit People & Wildlife

- Traditional Farmland Landscapes
  - remove the emphasis on intensive farming
  - permanent pasture
  - hedgerows and traditional farm woodlands
  - increased focus on smaller scale site by site benefits



# Site Management

- GreenArc established through three key mechanisms
  - public & voluntary sector purchases
  - land management agreements with landowners
  - Section 106 agreements & planning authorities
- Two key management styles
  - low input farm landscapes
  - minimum input naturalistic landscapes
- Location as one of the determining factors

# Benefit People & Wildlife

- Extensive naturalistic landscapes
  - large areas of relatively low management input
  - focus on natural processes & cycles
  - wooded and open landscapes
  - low intensity grazing may be a feature



# People & Wildlife Balance

- Facilities such as:

visitor/interpretation  
centres

car parks & signs

interpretation boards

all ability trails

way-marked trails for  
walking and cycling



# People & Wildlife Balance

- People engagement programmes

Community /  
Recreation Rangers  
events  
public liaison  
consultations  
educational  
programmes



# What has been achieved?

£2.3 million from the DCLG for:

- Woodland Trust site purchase at Theydon Bois
- Contribution towards purchase of Amwell Quarry Nature Reserve by Herts WT
- LVRPA Habitat Works at Sewardstone Marshes and extension of Sustrans Cycle Network
- Project Management costs for 2 years

Bringing the  
**BIG OUTDOORS**  
*closer to everyone*

# Theydon Bois



**GREEN ARC**  
Bringing the BIG OUTDOORS closer to everyone

# What Next?

- Further delivery of capital and revenue projects in defined target areas
- Closer consultation and liaison with landowners and agents
- Further development with community groups and the general public
- Income generation target of £10 million over 3 years
- New guidance for section 106 agreements for contributions to the GreenArc



# How can you help?

- Understand the benefits of this strategic landscape project
- Inform colleagues of the GreenArc and seek support
- Cascade GreenArc principles and objectives within the new planning process
- Support the draft guidance document in principle

# Staff January 2007

Mary Parodi – Director

Jim Smith – Operations Manager

Debbie Hadley - Administrator

# Contact Details

Mary Parodi – Director GreenArc

United Business Centres,

3rd Floor Endeavour House

Coopers End Road,

Stansted Essex CM24 1SJ

Mobile : 07920467101

Office : 01279 - 669452

Email : [mary.parodi@essexcc.gov.uk](mailto:mary.parodi@essexcc.gov.uk)

Website: [www.greenarc.org](http://www.greenarc.org)